

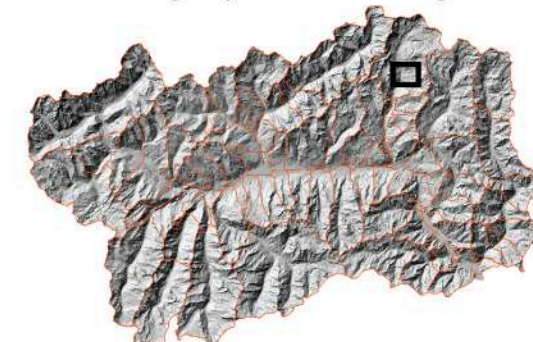
7°41'0"E

7°41'20"E

ITALY - VALLE D'AOSTA

Valtournenche municipality

Potential loss map

Geographical setting*Legend*

Potential losses (€/sqm)

Height of material

	No damage		< 1.25m
	<100.0		1.25-2m
	ADA		>2m
	Source areas		

Interpretation

The ADA (Active Deformation Areas) are used as source areas of possible debris flows. The Gravitational Process Path model is used to simulate the event, deriving landslide intensity. The product between exposure and vulnerability of the elements at risk defines the potential loss.

Cartographic information

WGS 84 UTM32N

 Scale: 1:3200

Data sources

The ADA were derived from Sentinel-1 interferometric data processed by CTTC. The cadastral catalogue was provided by the Valle d'Aosta region. The orthophoto is a WMS service obtained from the PCN-Ambiente Web-GIS.

Framework

U-Geohaz project is funded by the European Commission, Directorate General-Humanitarian Aid and Civil Protection (ECHO), under the call UCPM-2017-PP-AG.

45°42'50"N

45°42'50"N

45°42'40"N

45°42'40"N

7°41'0"E

7°41'20"E

